



Engineering and Design Summary

60% Design Deliverable

Town Council Meeting
November 3rd, 2022



moffatt & nichol

Master Planning



Key Features

Project Site Area (+/- 14 acres)	
<i>Market District</i>	
Multi-use Pavilion	1
Northern Parking Lot Improvements	2
Waterside Structural Improvements	3
Portable Restroom Trailers	4
Greenspace	5
<i>Marina District</i>	
50 Slip Marina	6
Multi-use Building – Marina Office, Public Restroom, Bait Shop	7
Utility Service Dock and Fuel Infrastructure	8
Waterside Structural Improvements and Boat Launch	9
<i>Lightning Point District</i>	
Southern Parking Lot Improvements	10
Transient South Dock	11
Sidewalks, Pavement, Stormwater Improvements	12
Kayak Launch	13

Schematic Design



Key Features

Project Site Area (+/- 14 acres)	
<i>Market District</i>	
Multi-use Pavilion	1
Northern Parking Lot Improvements	2
Waterside Structural Improvements	3
Portable Restroom Trailers	4
<i>Greenspace</i>	
<i>Marina District</i>	
50 Slip Marina	6
Multi-use Building – Marina Office, Public Restroom, Bait Shop	7
Utility Service Dock and Fuel Infrastructure	8
Waterside Structural Improvements and Boat Launch	9
<i>Lightning Point District</i>	
Southern Parking Lot Improvements	10
Transient South Dock	11
Sidewalks, Pavement, Stormwater Improvements	12
Kayak Launch	13

60% Design

Deliverables:

Plan Set (206 pages)

Opinion of Probable Cost

Basis of Design Report

Specifications Outline



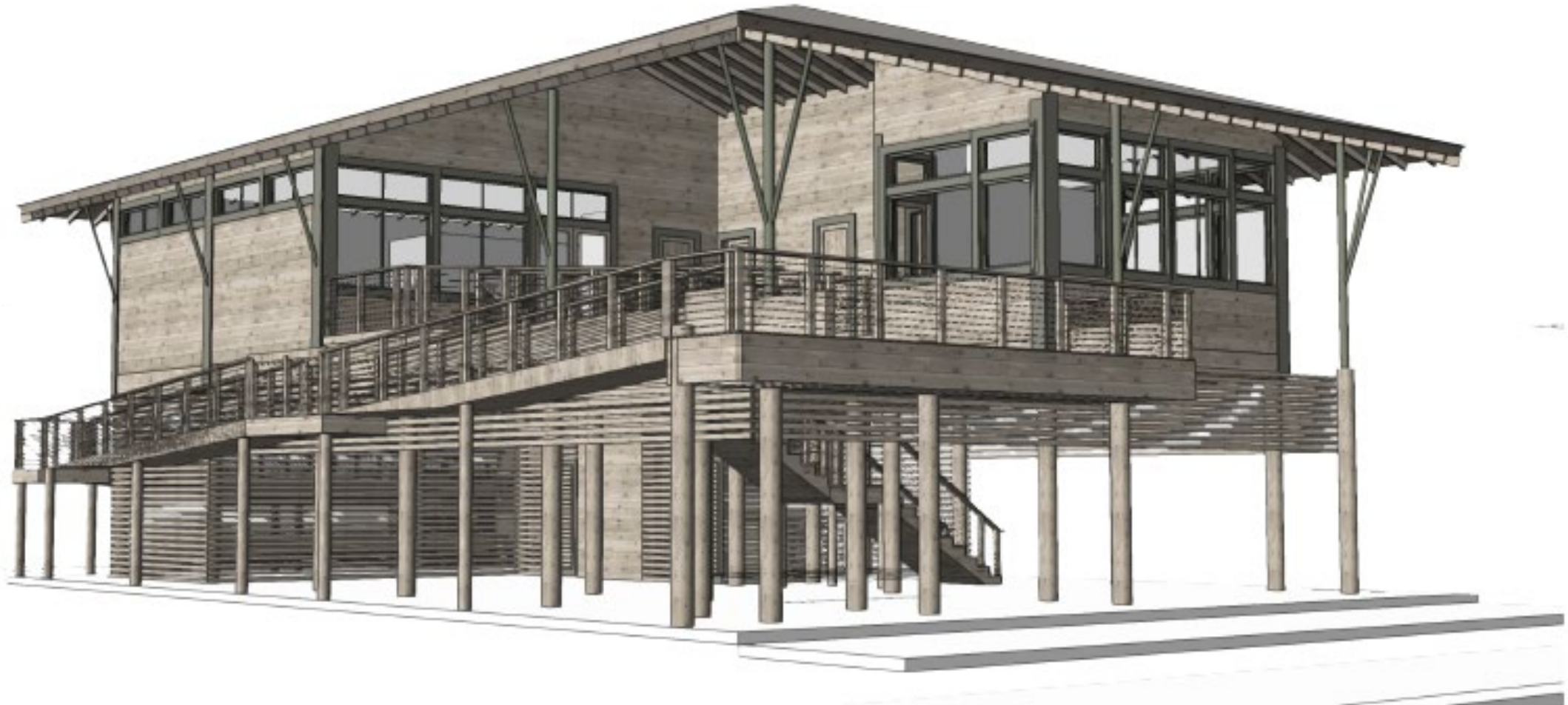








Multi-use Marina Building





Schedule

Task	2022								2023							
	May	Jun	Jul	Aug	Sept	Oct	Nov	Dec	Jan	Feb	Mar	Apr	May	Jun	Jul	Aug
Task 1: Schematic Design	█	█	█													
Task 2: Permitting					█	█	█	█	█	█	█	?	?	?	?	
Task 3: Design Development				█	█	█	█									
Task 4: Final Design								█	█	█	█	█				
Task 5: Site Program Planning					█	█	█	█	█	█	█	█	█	█	█	█
Bid Process													█	█	█	
Construction																?

Interactive Input

Website

www.bayoulabatrecitydocks.com

